

IPAM-4800 Series

48/24-Port IP DSLAM

IPAM-4800 series IP DSLAM has 48/24 ports subscriber line interface with POTS splitter built-in achieved 1U height space saving design. IPAM-4800 came with unique bandwidth management, flow prioritization and data flow security control key feature. IPAM-4800 provided QoS (quality of service) capability to meet triple play (voice, data, video) requirement, support ADSL/ADSL2/ADSL2+/ G.SHDSL interface, stackable up to 8 IPAM-4800 can be cascaded. No matters in features, performance, and cost wise, IPAM-4800 is the best choice for NSP (network service provider)



Features

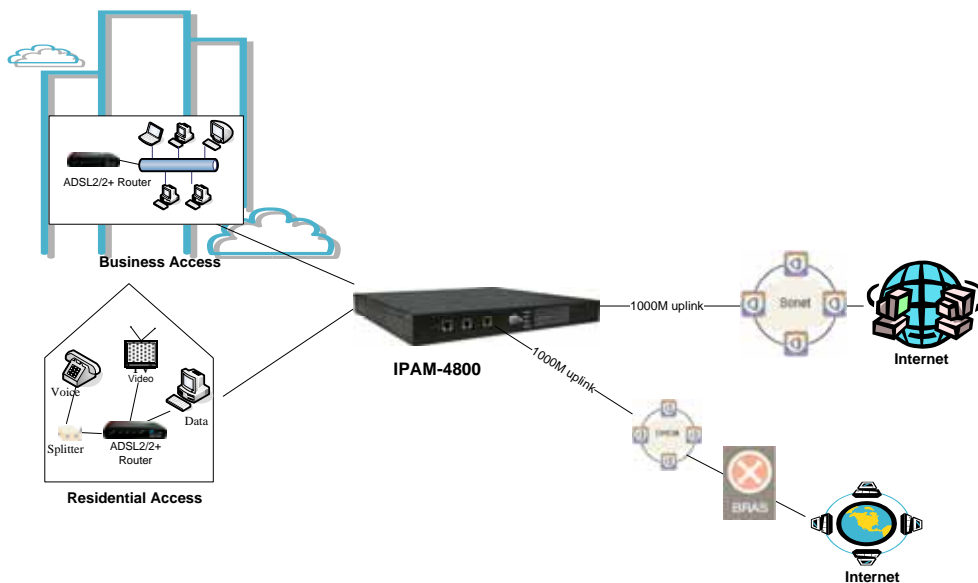
Excellent Management

- ▶ SNMP-based GUI EMS
- ▶ Local RS-232 CLI, and Ethernet SNMP/TELNET management
- ▶ Remote in-band SNMP/TELNET management
- ▶ Firmware upgradeable via FTP or TFTP



Advanced Functions

- ▶ Support 48*128 MAC address & 256 Multicast MAC address
- ▶ Support Static VLAN and Port-based VLAN
- ▶ Firewall security by VLAN filtering, MAC Filtering, IP Filtering, Access Control List by MAC and IP address
- ▶ Traffic prioritization (802.1p)
- ▶ Traffic bandwidth management by MAC and IP address
- ▶ Uplink Aggregation (802.3ad)
- ▶ Support 802.1x, DHCP Relay option 82, PPPoA to PPPoE conversion, etc

Application



Specification

System Features	ADSL/ADSL2/ADSL2+/G.SHDSL Interface
<ul style="list-style-type: none"> ▶ 48/24 ports ADSL/ADSL2/ADS2+/G.SHDSL subscriber interface with built-in POTS Splitter ▶ One 100BaseT MGNT+ Two 1000BaseT or one Giga LX Uplink/Subtend Interface (optional) ▶ Stackable up to 8 units to be cascaded ▶ Centronic 50 pin connector for Telco line in and out ▶ 8 VCs per xDSL port ▶ 128 MAC address per xDSL port ▶ 48*128 MAC address ▶ 256 Multicast MAC address ▶ 512 VLAN support ▶ Packet size 64 byte to 1522 byte 	<ul style="list-style-type: none"> ▶ ADSL/ADSL2/ADSL2+: Downstream DMT data rate 32 kb/s up to 25 Mbps; Upstream DMT data rate 32 kb/s up to 1 Mbps ▶ G.SHDSL: Symmetric transmission rate up to 2.32Mbps (2-wire) ▶ Comply with ITU G.992.1 (G.DMT),; G.DMT.bis; ITU G.992.2 (G.Lite); ANSI T1.413 issue 2; ITU G.994.1 (G.handshake) for ADSL, G.992.3 for ADSL2, and G.992.5 for ADSL2+, G.991.2 for G.SHDSL ▶ Extended power management capabilities to optimize power consumption for each application ▶ Distance up to 18kft
	Management
	<ul style="list-style-type: none"> ▶ Microsoft NT/SNMP-based GUI EMS ▶ Local RS-232 CLI and Ethernet SNMP/TELNET management ▶ Remote in-band SNMP/TELNET management ▶ Firmware upgradeable via FTP or TFTP ▶ Support SNMP v1, v2c, v3
Dimension and Weight	Protocols Support
<ul style="list-style-type: none"> ▶ Dimension: 400mm(D)x440mm(W)x44mm(H) ▶ Weight: 6.8kg 	<ul style="list-style-type: none"> ▶ STP; IGMP snooping, GMRP, GVRP, LACP, SNMP/UDP/IP/MAC/Ethernet
Power Source	Operating Requirements
<ul style="list-style-type: none"> ▶ AC power model: 90VAC ~ 240 VAC, 50-60 Hz ▶ DC power model: -42VDC ~ -56 VDC ▶ Power Consumption: 100 watts 	<ul style="list-style-type: none"> ▶ Operating Temperature: 0°~50 °C ▶ Storage Temperature: -30c°~70 °C ▶ Operating Humidity: 5% to 90% RH non-condensing
Uplink upgradeable module interface	
	<ul style="list-style-type: none"> ▶ 1* 1000BaseT-MGNT + 2*1000BaseT
	<ul style="list-style-type: none"> ▶ 1*1000BaseT-MGNT+1*1000BaseT+1*1000Fx(SX/LX/LH/ZX)

C-COM Corporation

6F, No. 6, Li-Hsin Rd. 6, Science-Based Industrial Park, Hsinchu 300, Taiwan

Tel: +886-3-5770747

Fax: +886-3-5790334

e-mail: contact@c-com.com.tw

URL: www.c-com.com.tw



Copyright © 2005 C-COM Corp. All rights reserved. Specifications are subject to change without notice.